



Upgrading the firmware of the TX1500 (H8/3064F)



Application Note How to install and use RENESAS Flash Development Toolkit



Building Block Video Ltd.,
17 Apex Park,
Diplocks Industrial Estate,
Hailsham, East Sussex, BN27 3JU UK

Tel: +44(0)1323 842727
Fax: +44(0)1323 842728
Support: +44(0)1323 444600
www.bbvctv.com

Introduction

This application note gives step by step instructions on how to install & use RENESAS Flash Development Toolkit. It is important to look closely at each option when installing. This is also true when using the Toolkit update the firmware of the BBV product.

Table of contents

| | |
|---|---|
| Installing RENESAS Flash Development Toolkit. | 4 |
| Configuring RENESAS Flash Development Toolkit. | 6 |
| Selection of file to be used & Programming Flash | 8 |
| Connection Information & Location of Programming Link | 9 |

Installing RENESAS Flash Development Toolkit.

How to install Flash Simple to your laptop:

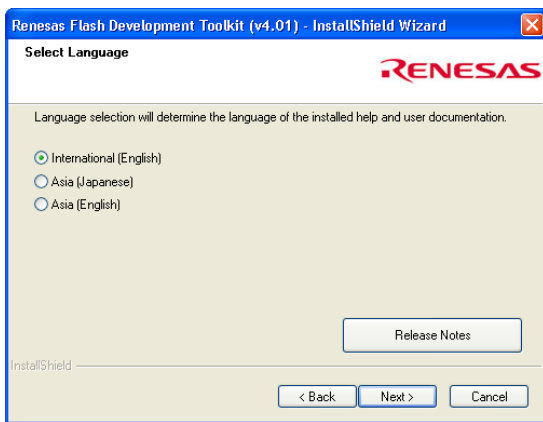
Step 1

Go to the BBV support website: www.support.bbvctv.com
Click 'Software and Utils'
Click 'New Version of Flash Simple' and save to your desktop
Double click on 'fdtc401r00' zipped file on your desktop, then double click 'fdtv401r00' file when it opens.



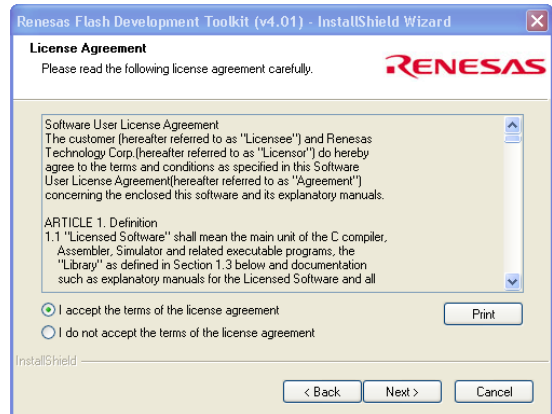
Step 2 'Select Language'

Click 'Next'
Then select the language and click 'Next'



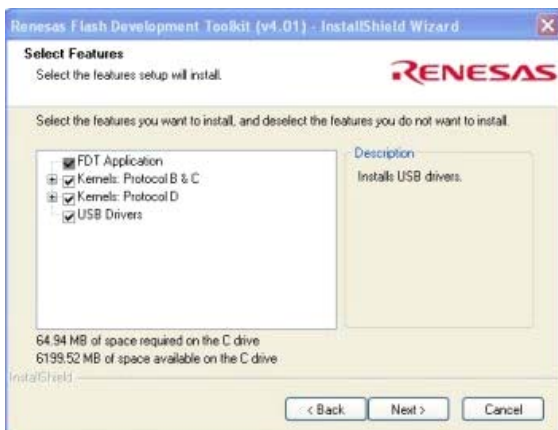
Step 3 'Licence Agreement'

Read through the Licence Agreement and click on the appropriate box to confirm acceptance of the terms.



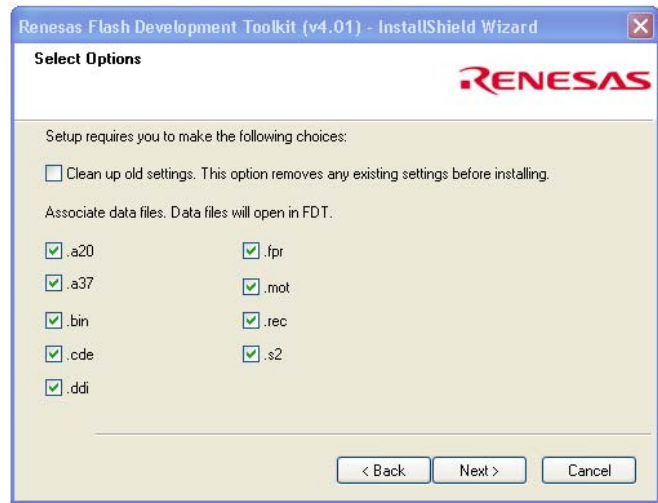
Step 4 Select Features

All boxes should be ticked.
Click 'Next'.



Step 5 Select Options screen

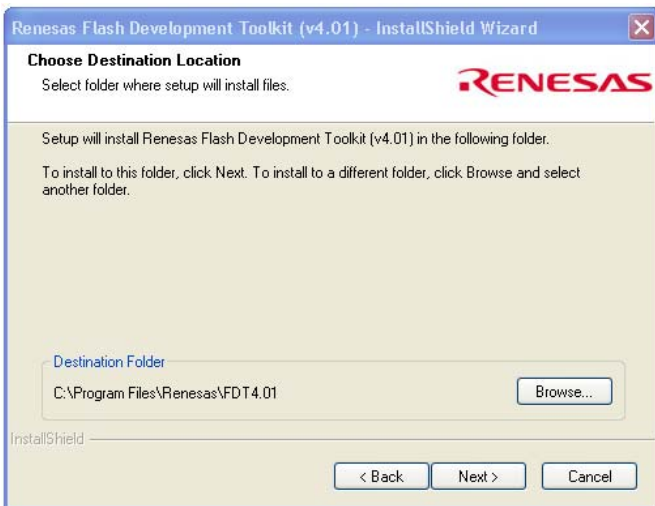
All boxes should be ticked.
Click 'Next'.



Step 6 Choose Destination Location

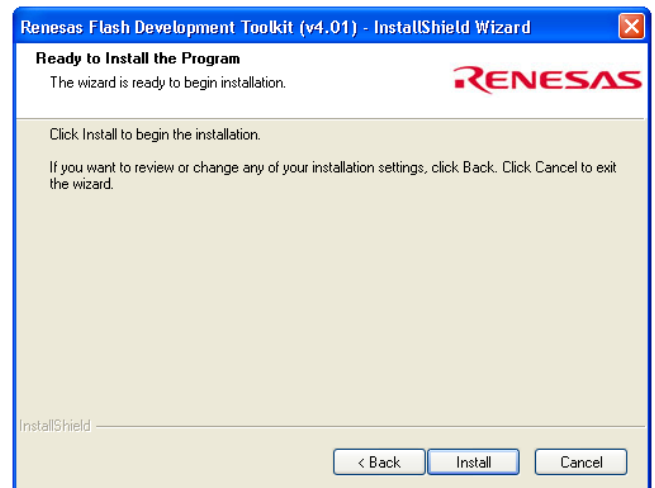
This screen allows you to choose the location of the files. It is recommended they are saved in the default location: C:\Program Files\Renesas\FDT4.01

Click 'Next'



Step 7 - Ready to install Program

Click 'Install'.



Step 8 - Successfully Installed.

Once the install is complete you will see this screen. Click 'Finish'.

This window will now close.



Configuring RENESAS Flash Development Toolkit.

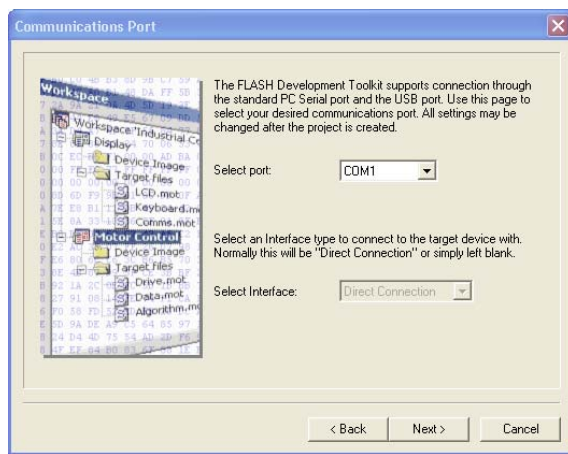
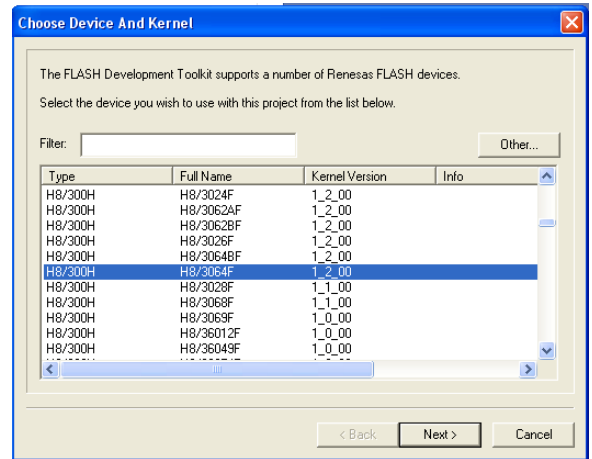


Step 9

- Go to Start
- Click All Programs
- Click Renesas
- Click Flash Development Tools 4.01
- Click Flash Development Tools 4.01 Basic

Step 10 Choose Device and Kernel

This screen will appear
Select H8/3064F



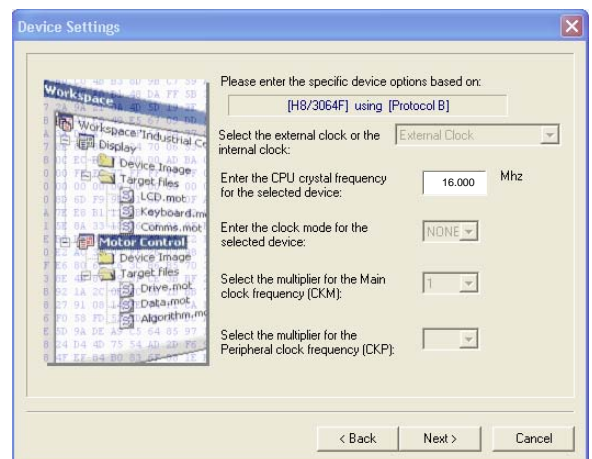
Step 11 COM Port selection

The correct COM port is selected by using the drop down box. The correct COM port will depend on your PC.

Click 'Next' when the correct COM Port is selected.

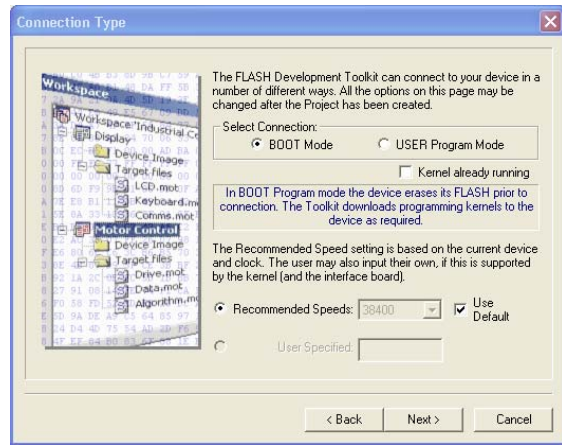
Step 12 Device Settings

Change the CPU crystal frequency to 16.000 Mhz
Click 'Next'



Step 13 Connection Type

Click 'Next'



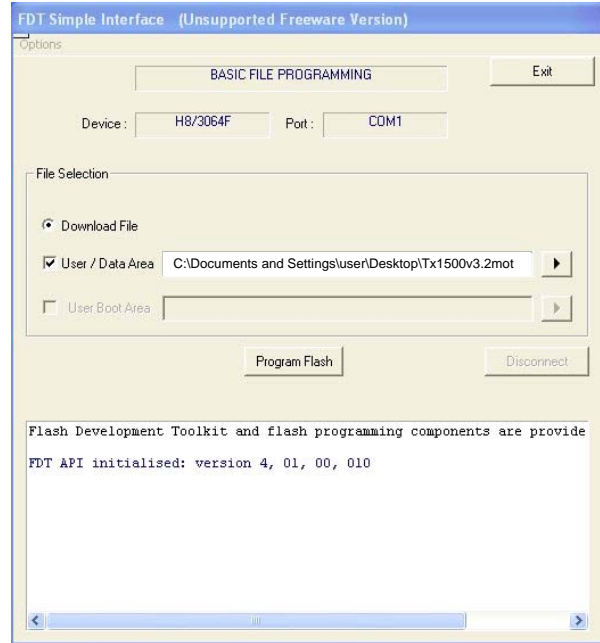
Step 14 Programming Options

Click 'Finish'. The FDT Simple Interface screen will come up:

Selection of file to be used & Programming Flash

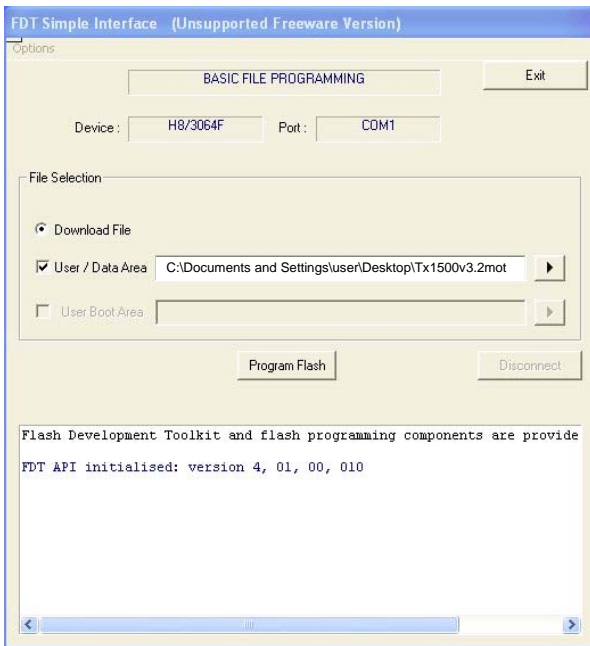
Step 14 File Selection

Click the 'User/Data Area' box
Click the arrow
'Browse' to where the Tx1500v3.2mot
file is saved.
This file will either been downloaded
from the BBV support website or
would have been sent be BBV
Support.



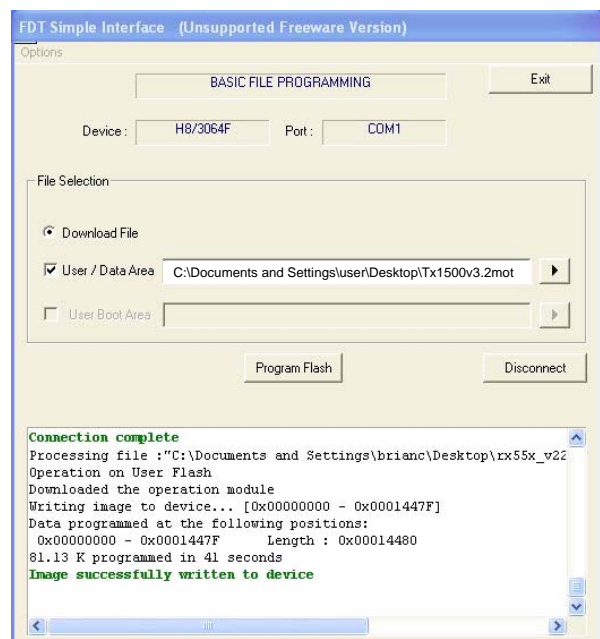
Step 15 Ready to Program Flash

With the new file selected. It is now time
to connect up the Matrix to the RS232
Kit. This must be done with the TX1500
Matrix powered down. see page 9. When
connected as shown & Programming link
fitted power the Matrix up.
Then Click 'Program Flash'



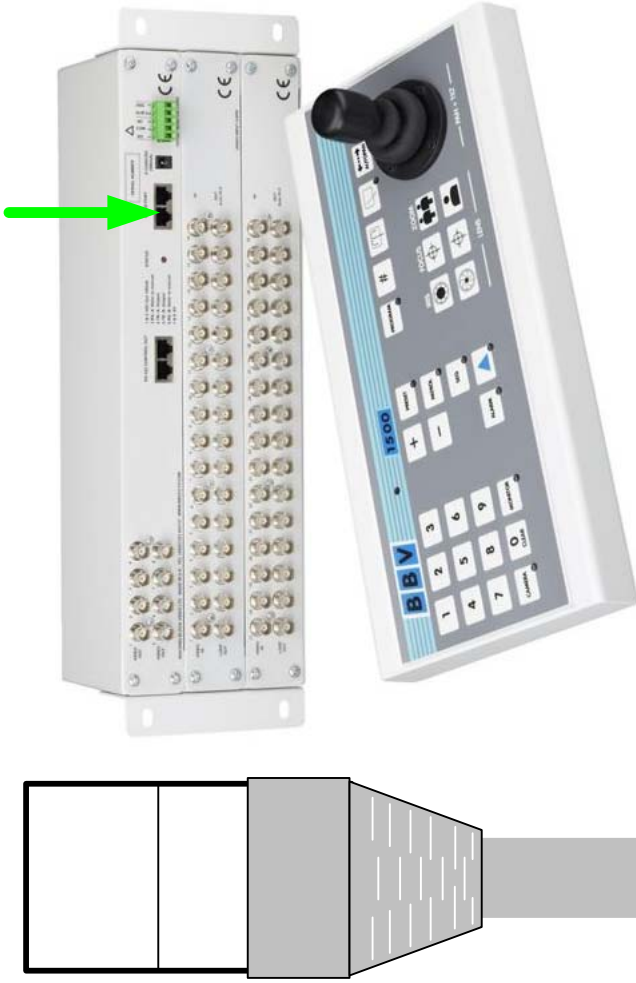
Step 16 Image successfully written to device

With the new firmware installed, Power down the
unit and remove the programming link. This Matrix
is now updated.

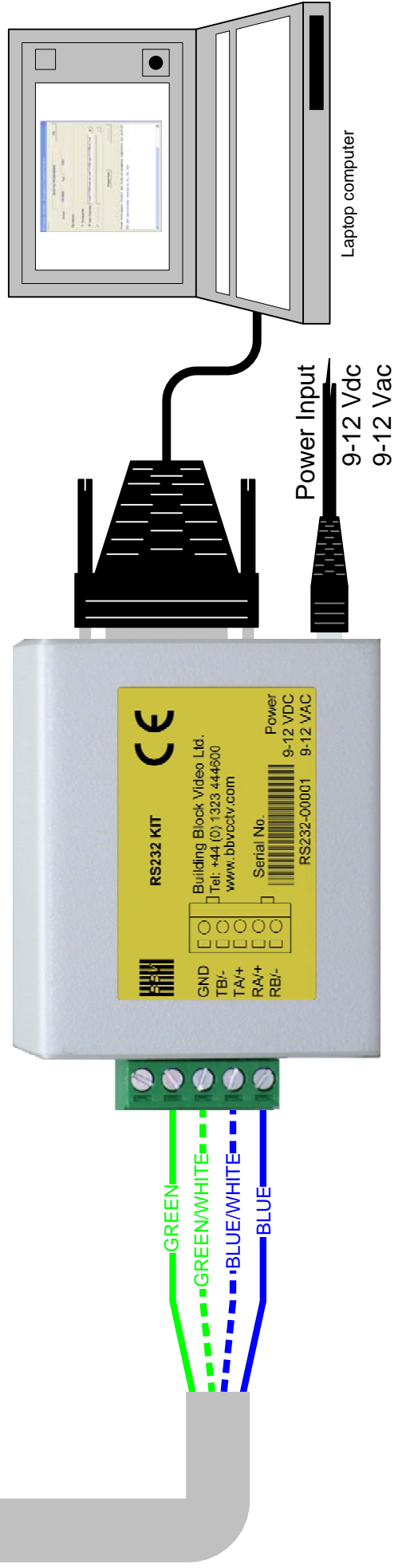
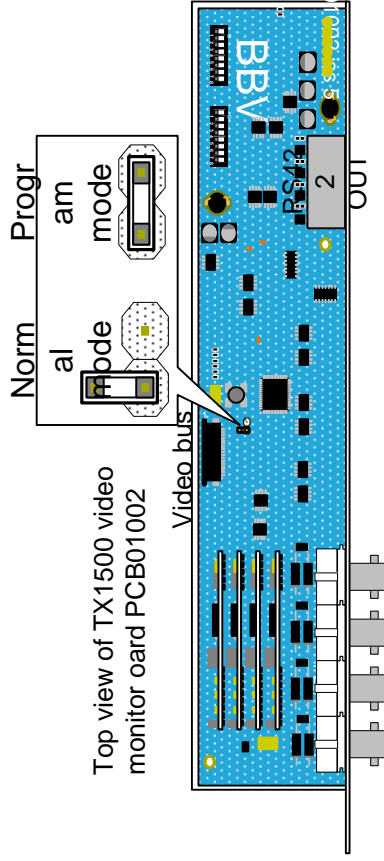


Connection Information & Location of Programming Link

USE BBUS PORT TO PROGRAM MATRIX



Programming LINK found at the rear of Matrix you will need to remove rear panel



Extend your BBV Warranty from 12 months to 3 years


As of the 1st September 2008 BBV have offered our customers the opportunity to extend the standard 12 month warranty to 3 years.

You must register for the extended warranty within 12 months of the date of manufacture.

How to register for the 3 year warranty

Registering for the new, longer 3 year warranty term is quick and easy. Either:

Complete the warranty application card that comes in the box with your BBV product, and return it FREEPOST to BBV:



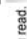
BBV 3 Year Warranty

If this card is returned with the serial number of the product and the installation company details BBV will extend the warranty period from 12 Months to 36 Months.

Number of Units, Start Serial No. Final Serial No.

Contact Name: _____
Company Name: _____
Phone Number: _____
Site Name: _____
Address 1: _____
Address 2: _____
Address 3: _____
Post Code: _____
e-mail address: _____

Please could you send me information especially on:
 Rx100s
 Rx45x & Rx55x
 FBM Video Matrices
 Tx1500 Video Matrices
 Starcard & Starcard Converters
 BBV Quad
 Pick A Point

Do you read:  **PSI MAGAZINE** 

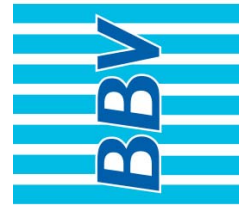
I do not require any other further product information.

Please refer to WWW.BBVCCTV.COM for terms, conditions & exclusions

VAT Reg. No. 621758439 Registered in England No. 2852921 Registered office: 17 Apex Park Dipoles Way Hailsham East Sussex UK BN27 3JU

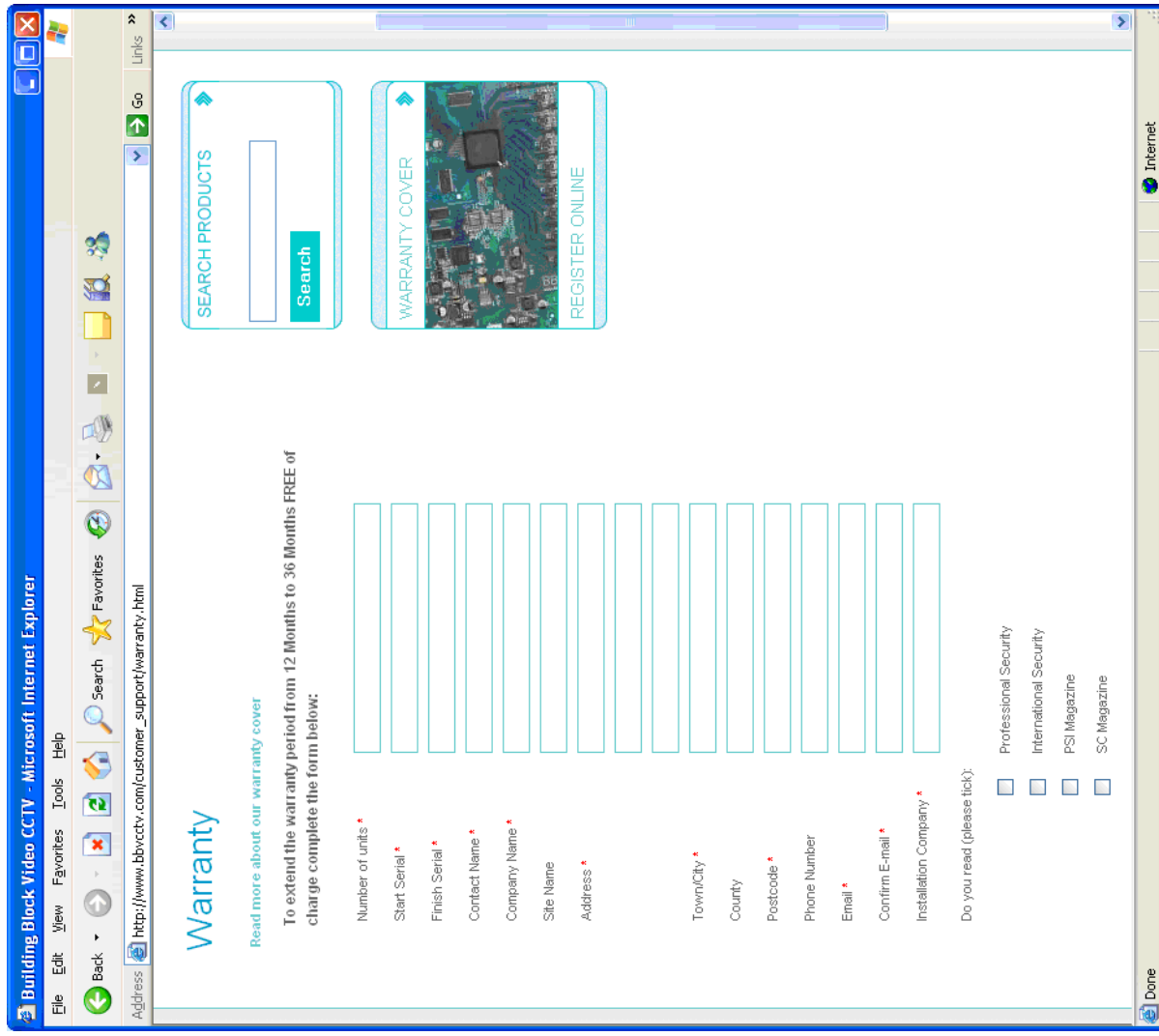
Or Alternatively:

Register online at www.bbvctv.com
Simply enter your details on the 'Warranty Cover' Page



Building Block Video Ltd

Tel: + 44 (0) 1323 842727
Fax: + 44 (0) 1323 842728
Support: + 44 (0) 1323 444600
www.bbvctv.com



The screenshot shows a web browser window with the address http://www.bbvctv.com/customer_support/warranty.html. The page title is "Warranty". It features a navigation bar with "SEARCH PRODUCTS" and "WARRANTY COVER" buttons. The main content area contains a form for registration with fields for: Number of units, Start Serial, Finish Serial, Contact Name, Company Name, Site Name, Address, Town/City, County, Postcode, Phone Number, Email, Confirm E-mail, and Installation Company. There are also checkboxes for "Professional Security", "International Security", "PSI Magazine", and "SC Magazine". A "SEARCH" button is visible at the bottom right of the form area.