



INTELLEX KIT (CTI Interface)



Installation Guide



Building Block Video Ltd
17 Apex Park, Diplocks Industrial Estate
Hailsham, East Sussex, BN27 3JU, UK
Tel: + 44 (0) 1323 842727
Fax: + 44 (0) 1323 842728
Support: + 44 (0) 1323 444600
Website: www.bbvctv.com

PRE-INSTALLATION CHECKS AND SAFETY PROCEDURES

UNPACKING

Check Packaging - Upon taking delivery of the unit, inspect the packaging for signs of damage. If damage has occurred, advise the carriers and/or the suppliers immediately.

Check Contents - Unpack the receiver carefully and check that all the items are present and correct. If any items are missing or damaged, contact your equipment dealer.

Retain Packaging - The shipping carton is the safest container in which to transport the unit. Retain undamaged packaging for possible future use.

IMPORTANT SAFETY PRECAUTIONS

Read Instructions - All relevant safety, installation and operating instructions should be read before attempting to install, connect or operate the unit.

Retain Instructions - All safety, installation and operating instructions should be retained for future reference.

Heed Warnings - All warnings on the unit and any relevant safety, installation or operating instructions should be adhered to.

Cleaning - Unplug the unit from the power outlet before cleaning. Do not use liquid cleaners or aerosol cleaners. Use a damp cloth for cleaning.

Attachments - Do not use attachments not recommended by the product manufacturer as they may cause hazards.

Water and Moisture - Do not expose this unit to water or dampness; for example, in an unprotected outdoor installation, or in any area classified as a wet location.

Power Sources - This unit should be operated only from the type of power source indicated on the manufacturer's label. If you are not sure of the type of power supply you intend to use, consult your equipment dealer or local power company. For units intended to operate from battery power or other sources, refer to operating instructions.

Overloading - Do not overload outlets and extension cords, as this can result in fire or electric shock.

Object and Liquid Entry - Never push objects of any kind into the unit, as they may touch dangerous voltage points or short out parts that could result in fire or electric shock. Never spill liquid of any kind on or inside the unit.

Servicing - Servicing of the unit should only be undertaken by qualified service personnel, as opening or removing covers may expose you to dangerous voltages or other hazards.

Damage Requiring Service - Servicing by qualified personnel should be carried out under the following conditions:

- (a) When the power supply cord or plug is damaged;
- (b) If liquid has been spilled, or objects have fallen into the unit;
- (c) If the internal electronics of the unit have been exposed to rain or water;
- (d) If the unit does not operate normally by following the operating instructions. Adjust only those controls that are covered by the operating instructions, as improper adjustment of other controls may result in damage;
- (e) If the unit has been dropped or the enclosure is damaged;
- (f) If the unit exhibits a distinct change in performance. This indicates a need for service.

Replacement Parts - If replacement parts are required, ensure that only replacement parts recommended by the product manufacturer are used.

Safety Check - Upon completion of any service or repairs to the unit, safety checks should be performed to ensure that the unit is in proper operating condition.

Pre-installation Checks - It is recommended that the unit be bench-tested prior to installation on the site.

Adhere to Safety Standards - All normal safety precautions as laid down by British Standards and the Health and Safety at Work Act should be observed.

WARNING

TO PREVENT DANGER OF FIRE OR SHOCK, DO NOT EXPOSE THE INTERNAL COMPONENTS OF THIS EQUIPMENT TO RAIN OR MOISTURE.



The “lightning flash with arrowhead” symbol inside an equilateral triangle is used to warn the user of this equipment that there are sufficiently high voltages within the enclosure to constitute a risk of electric shock.



The “exclamation point” symbol inside an equilateral triangle is used to alert the user of this equipment to important operating and maintenance (servicing) instructions in the literature accompanying the appliance.

Technical Specification

Power Requirements	9Vdc 300mA
Input	RS232 Sensormatic/AD RS422 - 9 Pin D-Type (4800,N,8,2)
Outputs	1x Full Duplex RS422
Facilities	2 front panel diagnostic LEDs

INTRODUCTION

The Intellex kit is designed to allow the Intellex DVR to control the CTI/8 & CTI/16 from its RS232 Edge Port Converter.

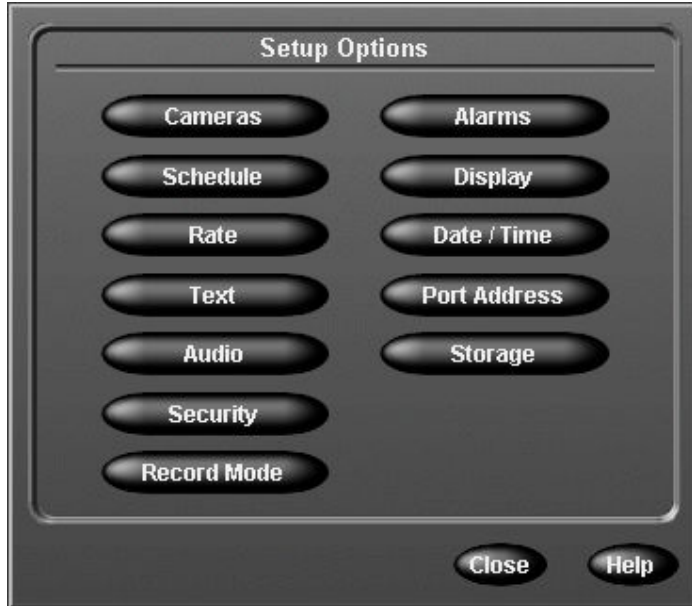
NOTE: The CTI/1 requires an 1-2-1 Protocol Converter. For more information about the 1-2-1 Protocol Converter please contact sales on +44 (0) 1323 842727 or go to www.bbvctv.com.

ITEMS INCLUDED IN THIS KIT

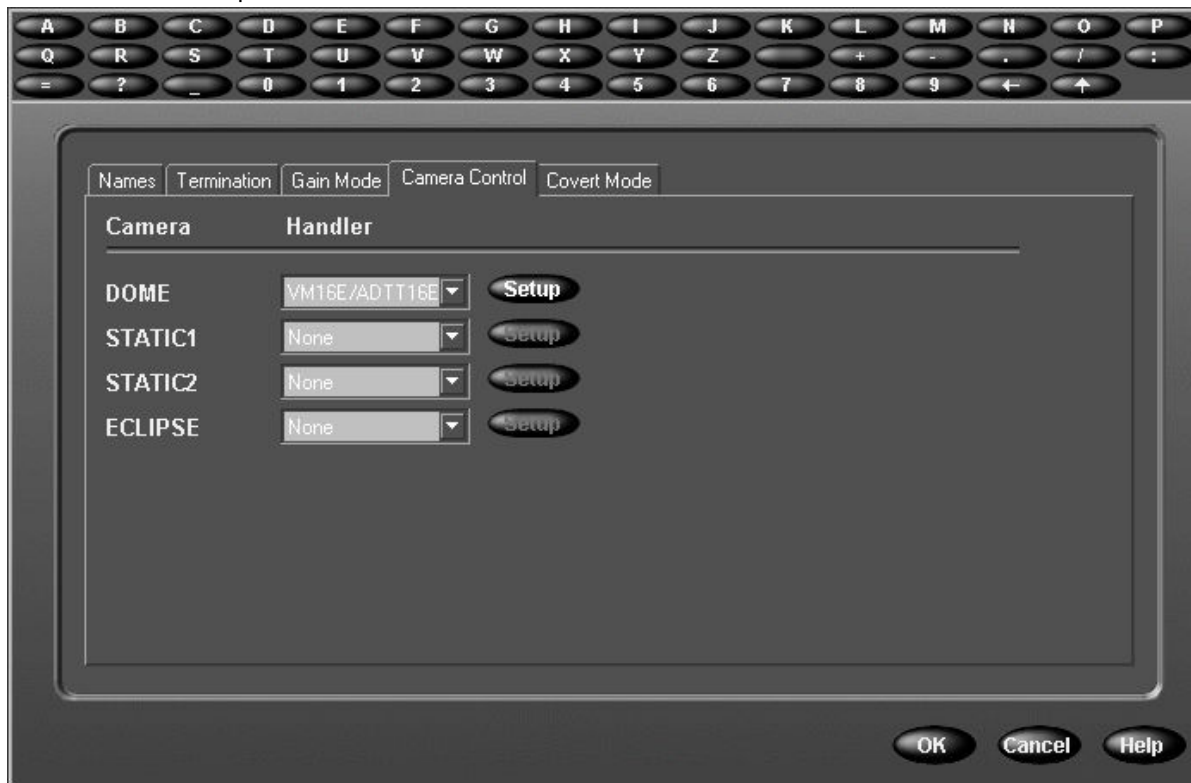
- 1 x TXLD
- 1 x 9VDC 500mA PLUG TOP PSU
- 1 x SA-PL61-1 RS232 Null Modem cable

INTELLEX – Adding the Edgeport USB/RS232 converter

At the setup screen select CAMERAS

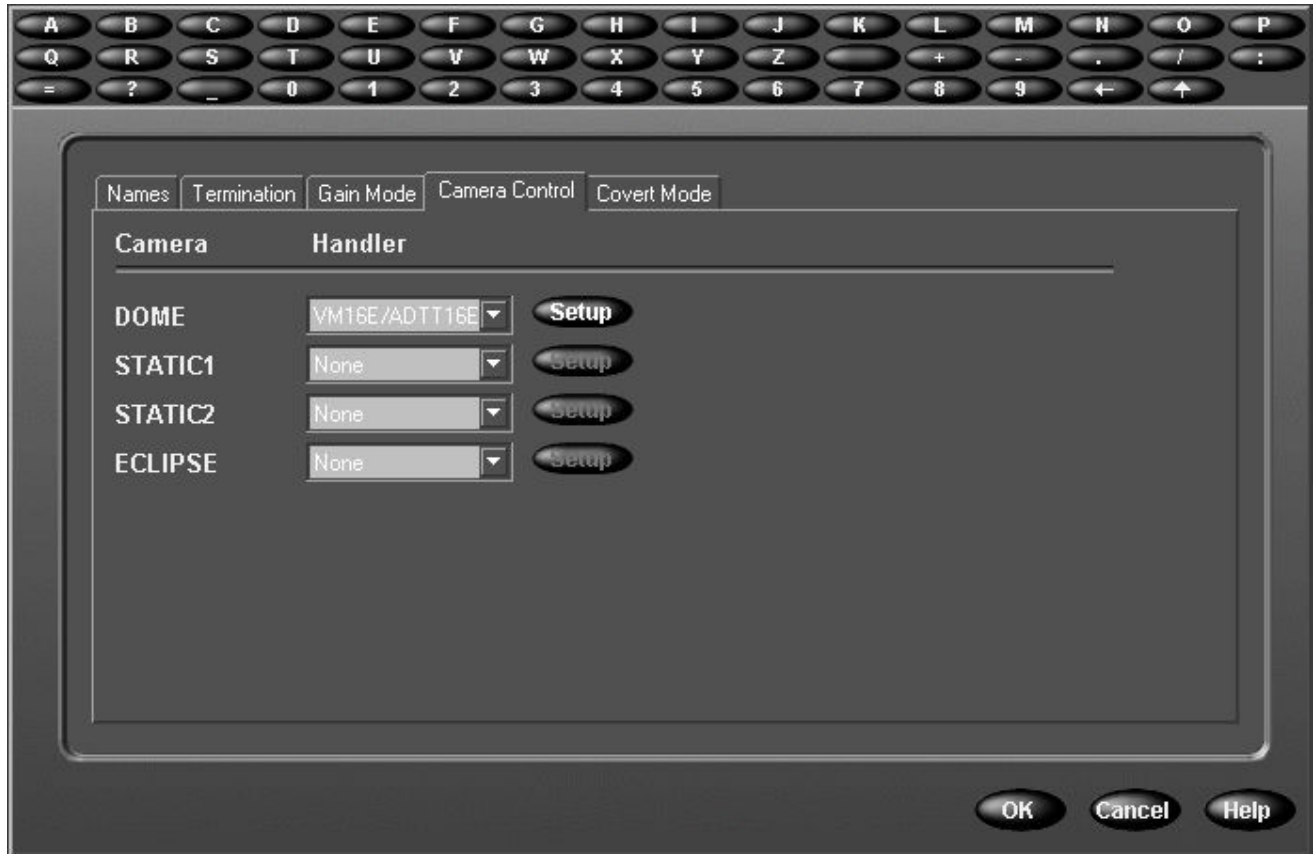


In the CAMERA setup screen select the CAMERA CONTROL TAB



In the CAMERA CONTROL window select 'RS422 Dome from the HANDLER' in the drop down menu for the camera to be controlled by the BBV converter.

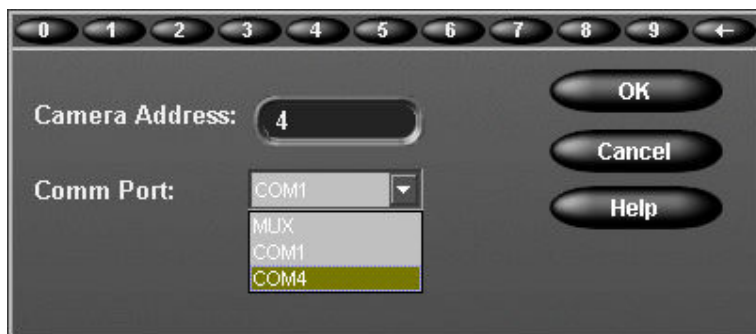
The SETUP button will become active, click the SETUP button



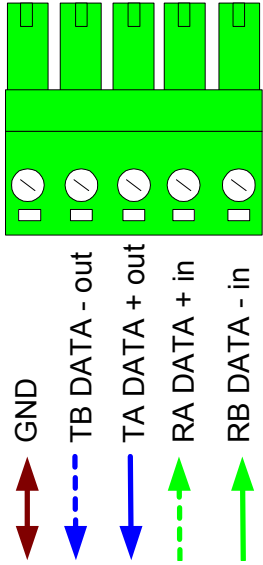
Select the Telemetry address for the camera (this may be different from the Video channel you have the camera connected to on Intellex, see BBV converter notes for further guidance).

From the COM PORT drop down select the port address of the Edgeport USB to Serial converter (NB - DO not use MUX or Com1).

Click OK and exit out of the Intellex camera setup, configuration of the Intellex is complete for use with the BBV Protocol converter.



RS422 Full Duplex connections
Data connection to the CTI/8 & 16



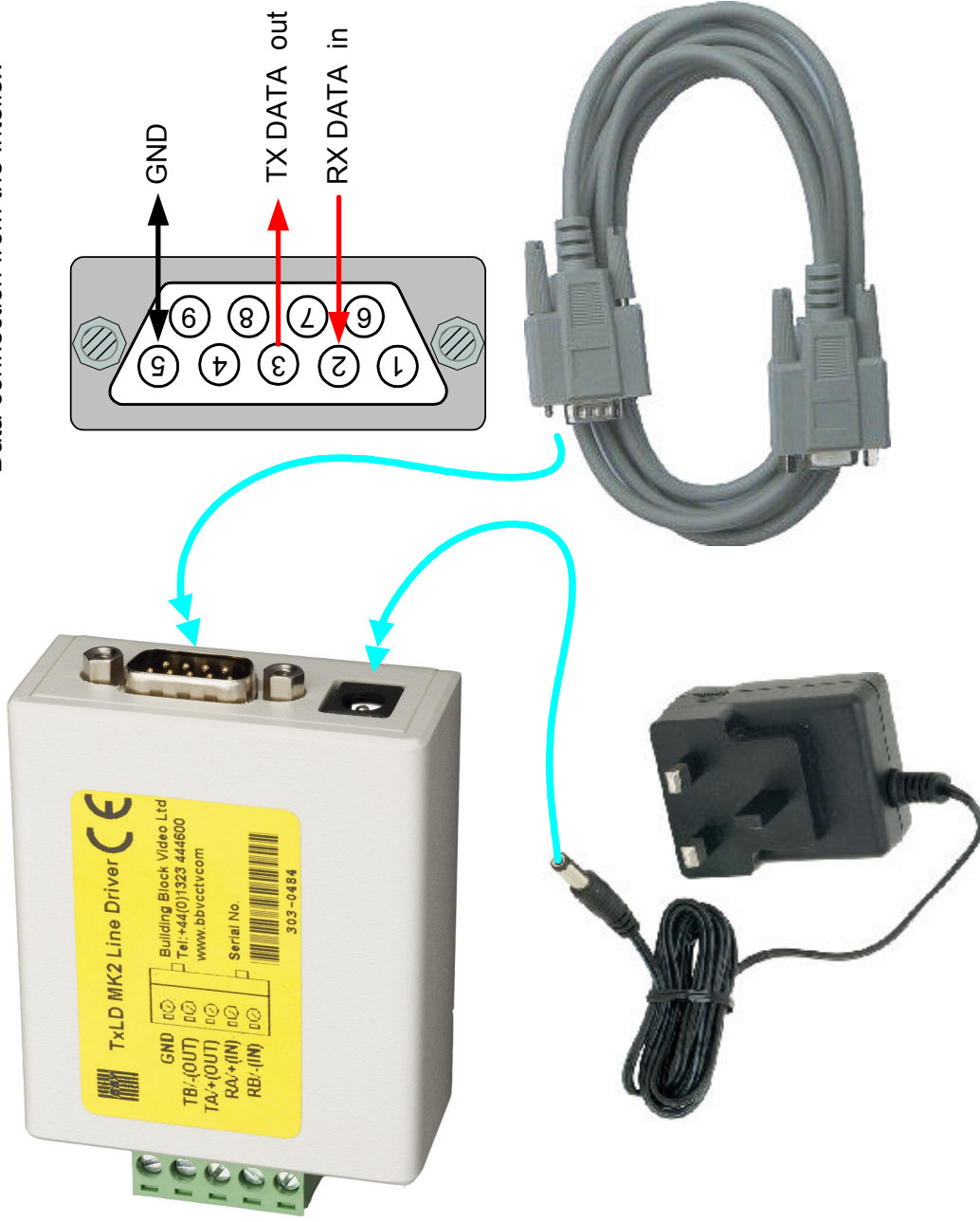
Cut one end of the RJ45s off the short CAT5 Cable that is supplied with the CTI/8 & 16.

Connect in the following order:

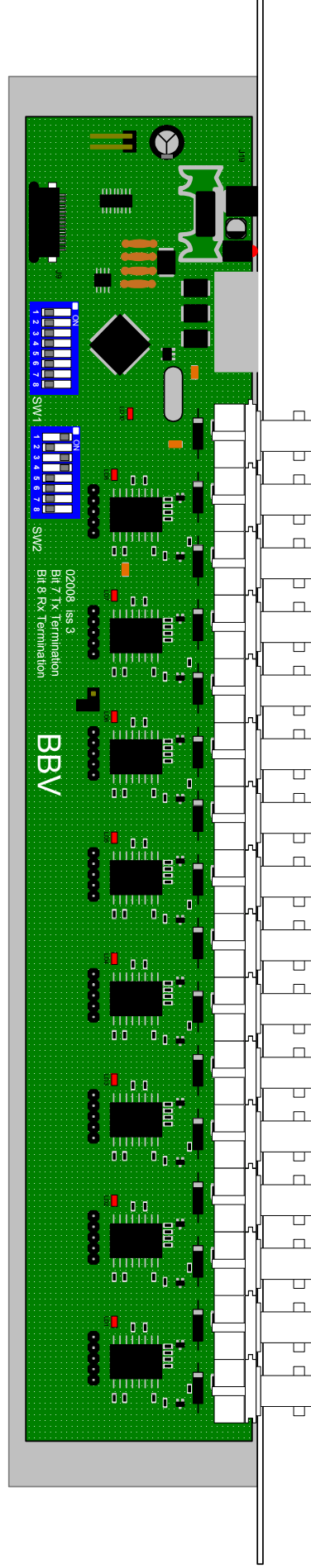
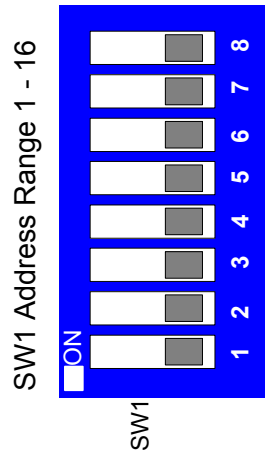
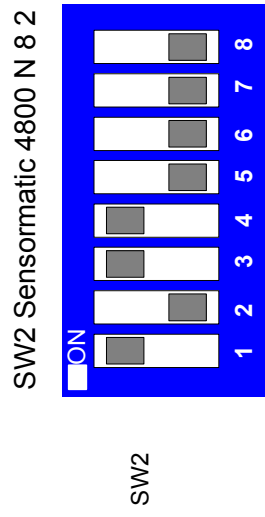
- | | |
|--------------------|------------|
| CAT5 CABLE | TXLD |
| BROWN | GND |
| BLUE/WHITE | TB |
| BLUE | TA |
| GREEN/WHITE | RA |
| GREEN | RB |

NOTE: All other cores are not required. Ensure you do not short them together.

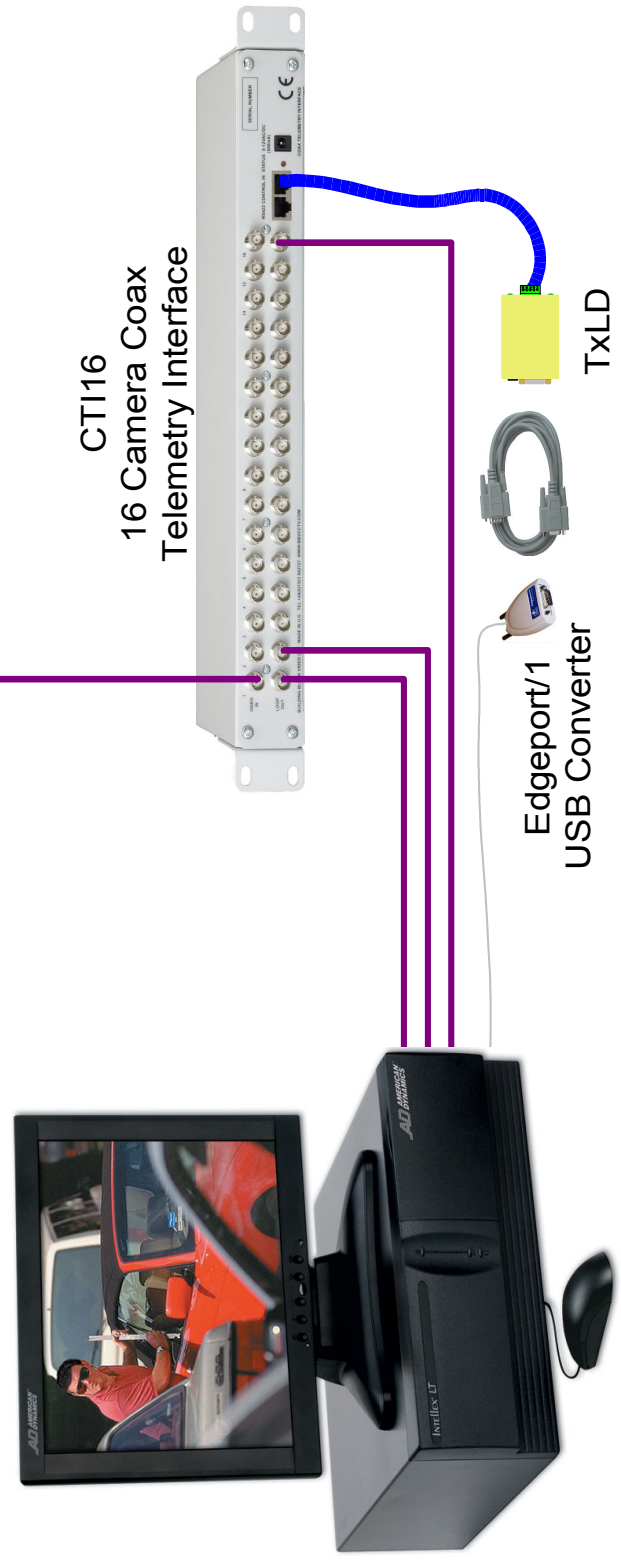
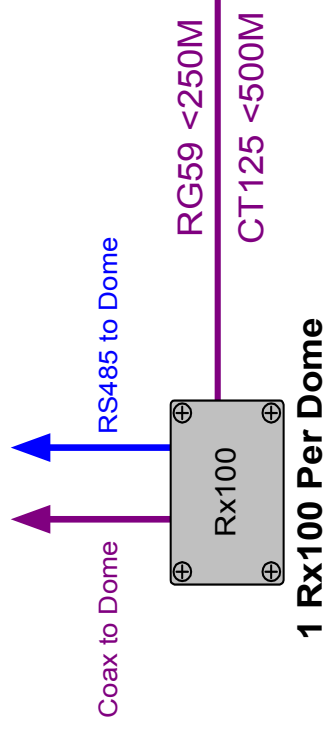
RS232 Full Duplex connections
Data connection from the Intellex



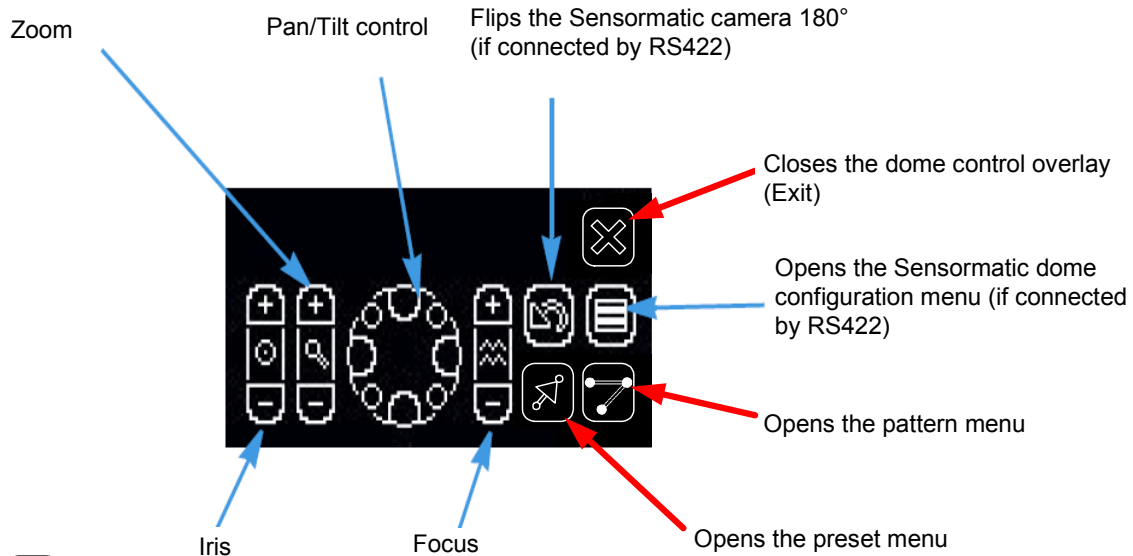
CTI/8 & 16 Switch Settings for Sensormatic RS422 N 8 2





-  Sensormatic
-  Mark Mercer
-  JVC TK_C676
-  Pelco Domes
-  Pelco Esprit
-  Bosch Domes
-  All Dennard Domes
-  Panasonic
-  Aritech
-  LG Domes
-  VCL Honeywell
-  Forward Vision

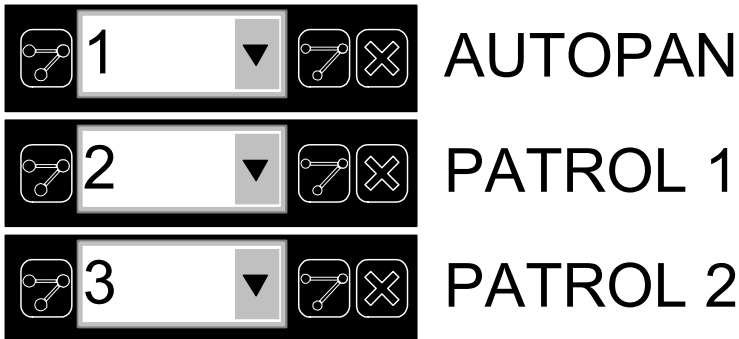



Navigating the Intellex menu:

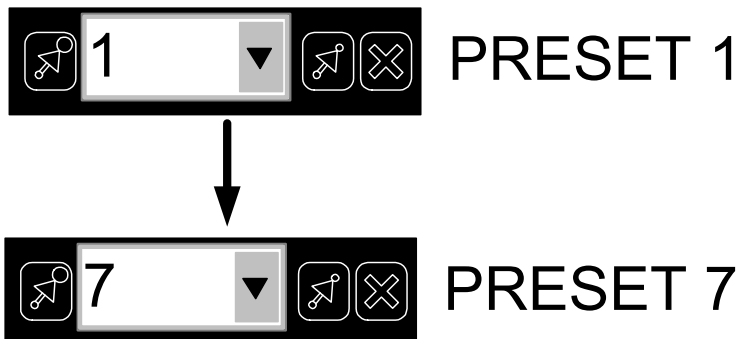


 The dome symbol appears with video from a camera with dome control.

 Click Pattern for the pattern menu:



 Click Preset to display the preset menu.





The dome symbol appears with video from a camera with dome control.



Click Pattern for the Pattern menu.



Click Pattern 3, 5 times for the # commands support:



PATTERN 3, 5 times



Click to close the Pattern menu.



Click Preset to display the Preset menu.



Click Save Preset 1 to send a #1 from the CTI16.



PRESET 1



Click Save Preset 4 to send a #4 from the CTI16.



PRESET 4



Click Save Preset 6 to exit # commands support or wait 5 minutes.



PRESET 6



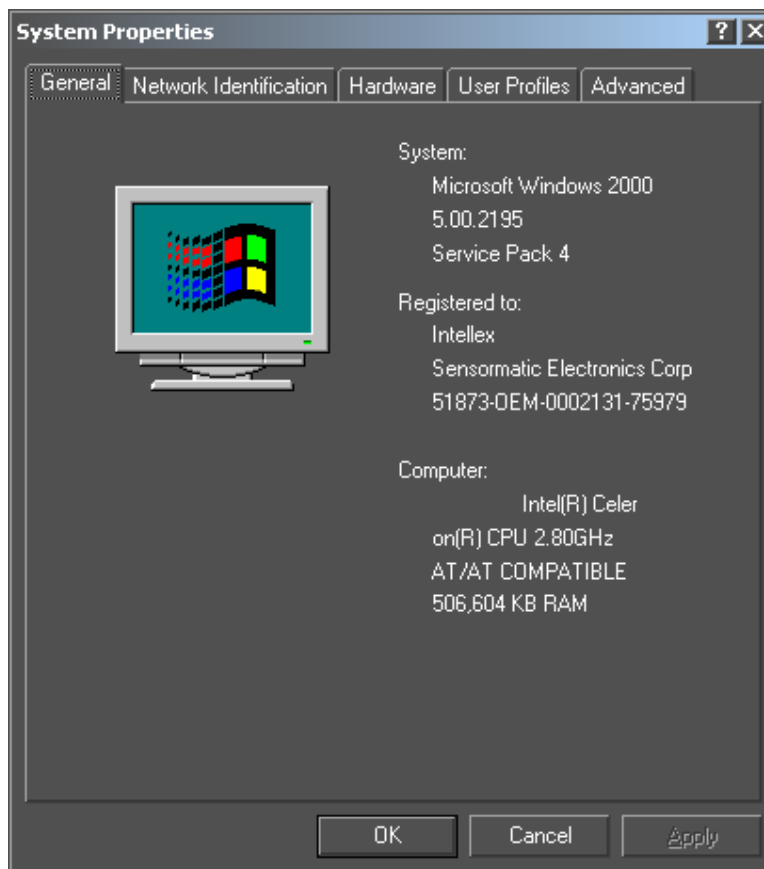
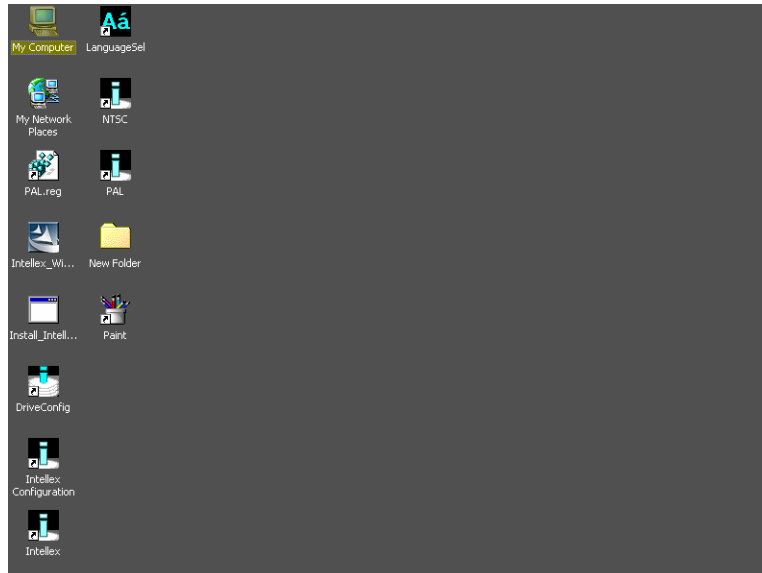
Click to close the Preset menu.

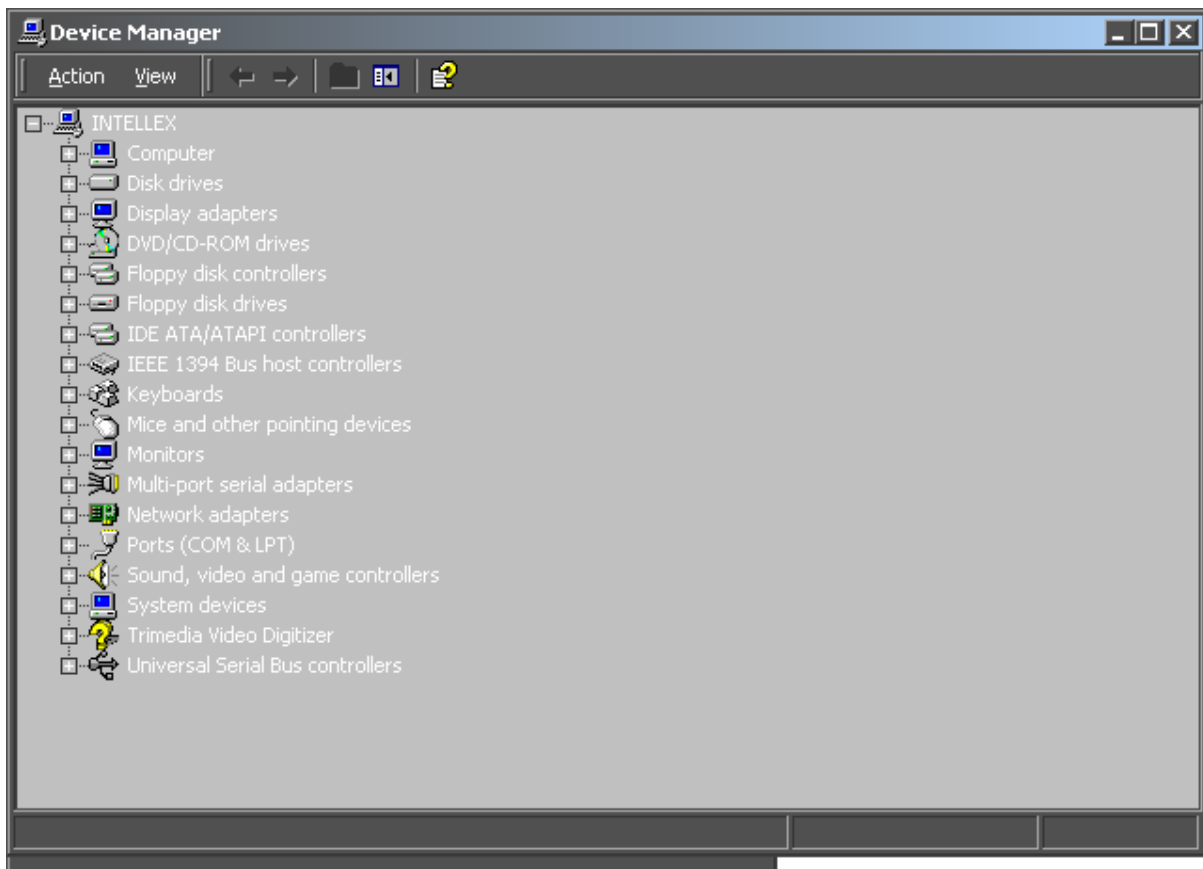
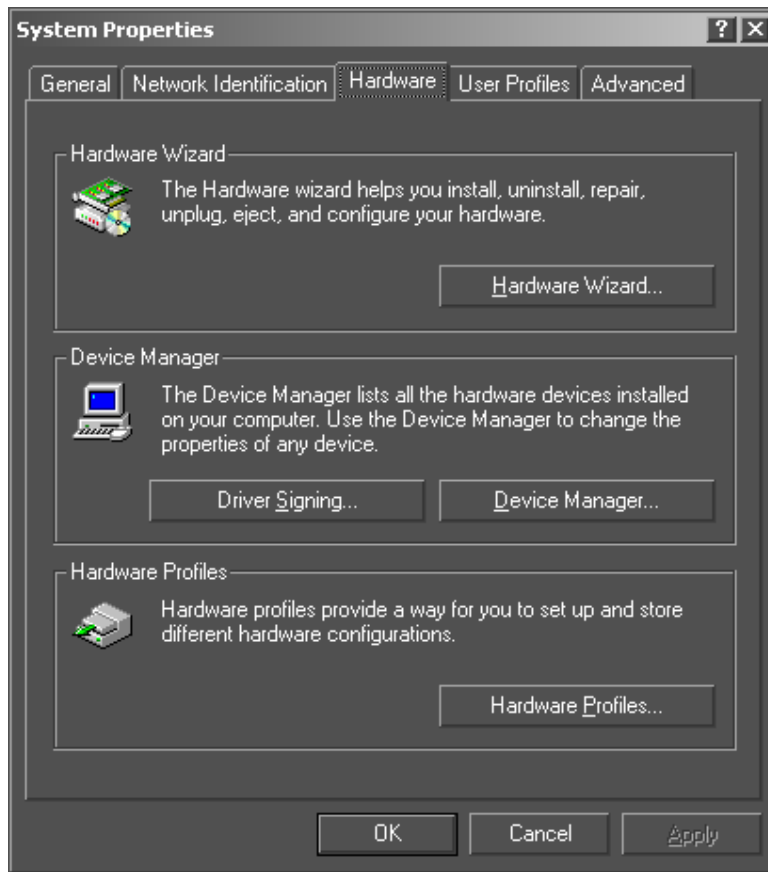
Please refer to the RX100 manual for Individual # command Applications.

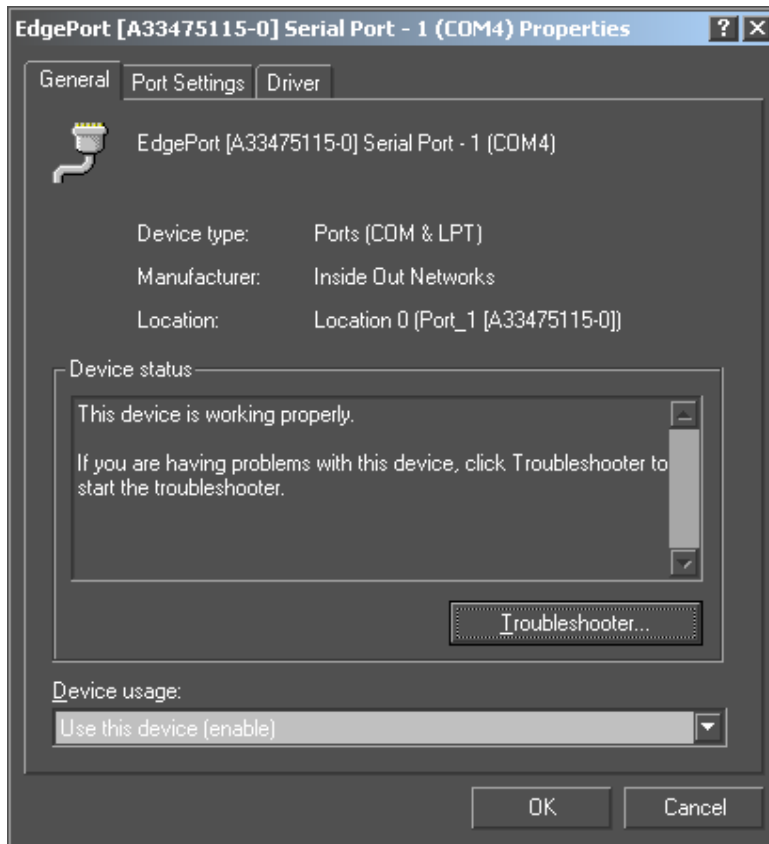
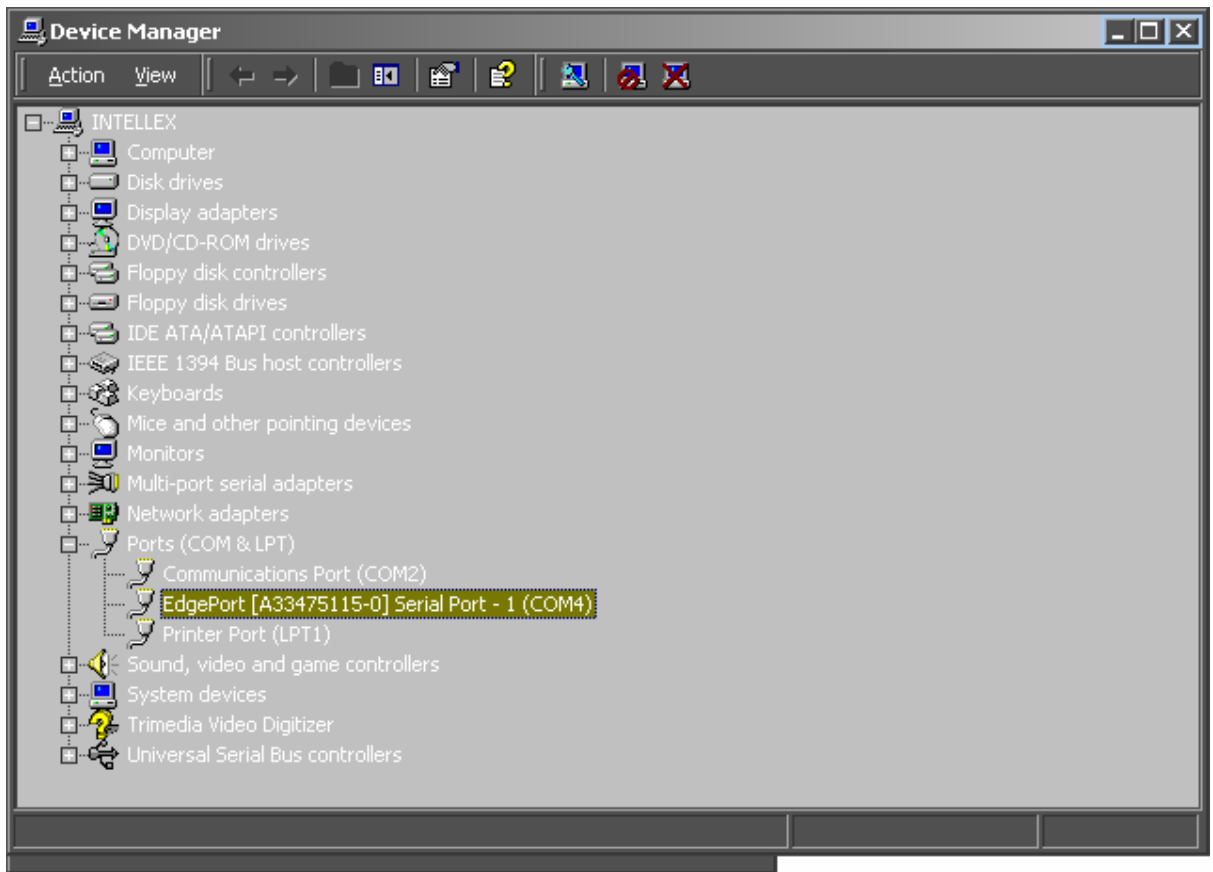
Checking the Edgeport setup:

The following pictures are Windows screenshots for checking Edgeport setup.

If it does not appear in the Intellex setup, and is not found in the DEVICE MANAGER window, call the TYCO Helpdesk in ECHT for support: 0870 123 8787.







Extend your BBV Warranty from 12 months to 3 years

As of the 1st September 2008 BBV have offered our customers the opportunity to extend the standard 12 month warranty to 3 years.

You must register for the extended warranty within 12 months of the date of manufacture.

How to register for the 3 year warranty

Registering for the new, longer 3 year warranty term is quick and easy.

Either:

Complete the warranty application card that comes in the box with your BBV product, and return it FREEPOST to BBV:

BBV 3 Year Warranty

If this card is returned with the serial number of the product and the installation company details BBV will extend the warranty period from 12 months to 36 months.

Number of Units, Start Serial No. Final Serial No.

Contact Name _____
 Company Name _____
 Phone Number _____
 Site Name _____
 Address 1 _____
 Address 2 _____
 Address 3 _____
 Post Code _____
 e-mail address _____

Please could you send me information especially on:
 Rx100s
 Rx45x & Rx55x
 FBM Video Matrices
 Tx1500 Video Matrices
 Starcard & Starcard Converters
 BBV Quad
 Pick A Point

Do you read **PSI MAGAZINE** **PSI MAGAZINE**

I do not require any other further product information.

BBV is a registered trademark of Building Block Video Ltd. Conditions & exclusions apply. BBV is registered in England No. 265201 Registered Office: 17, York Way, London, N1 6AA, UK. VAT Reg. No. 81278269. Registered Office: 17, York Way, London, N1 6AA, UK. BBV 3.0

Or alternatively:

Register online at: www.bbvctv.com
 Simply enter your details on the 'Warranty Cover' page.

Building Block Video Ltd

Tel: + 44 (0) 1323 842727
 Fax: + 44 (0) 1323 842728
 Support: + 44 (0) 1323 444600
www.bbvctv.com

