



Micro SD Card Upload for RX45X & RX55X MK5



SD Card Upload for RX45X & RX55X MK5 Instruction Manual



Building Block Video Ltd.,
17 Apex Park,
Diplocks Industrial Estate,
Hailsham, East Sussex, BN27 3JU UK

Tel: +44(0)1323 842727
Fax: +44(0)1323 842728
Support: +44(0)1323 444600
www.bbvccctv.com

Please read this.

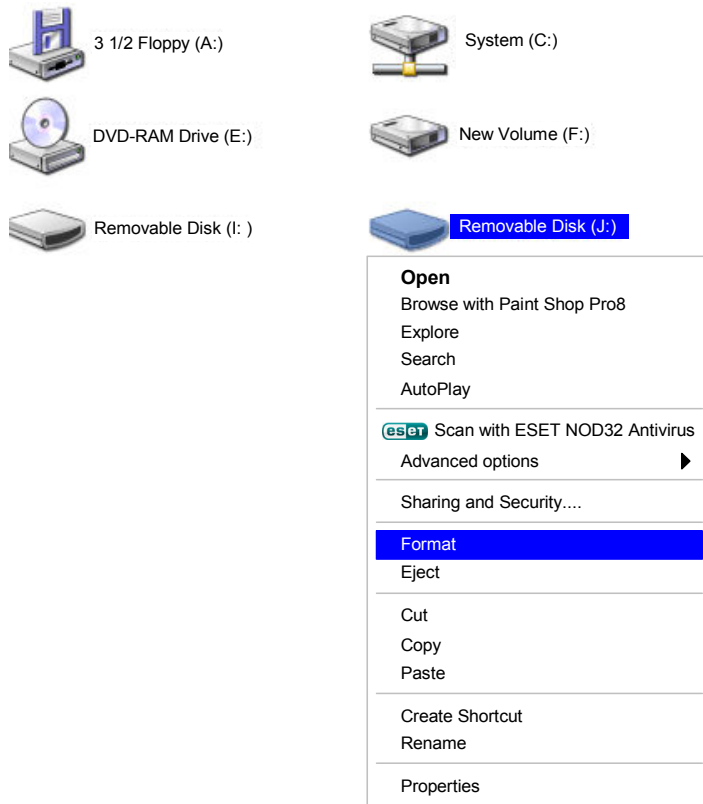
Programming the receiver is very straight forward and reliable however it is very important that you follow all the steps in the correct order. It is also very important that the supply to the receiver is not lost during the programming operation. If not you will run the risk of requiring the receiver to be sent back to BBV for reprogramming.

A VIDEO SOURCE MUST BE CONNECTED TO THE RECEIVER WHEN CARRYING OUT THIS PROCEDURE.

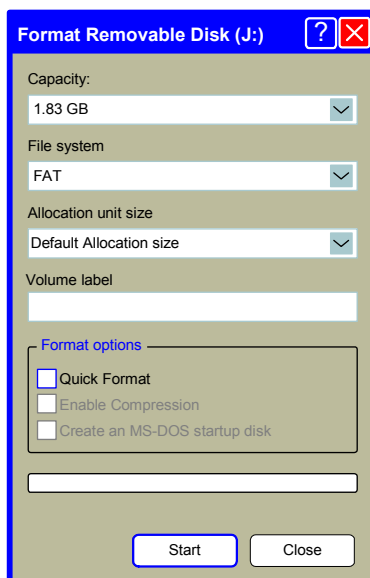
The latest firmware for the RX45X & RX55X MK5

The RX45X & RX55X can now have the firmware updated from a Micro SD card. The latest software can be downloaded from our support web <http://www.support.bbvccctv.com/> . You will need to navigate to the software & utils page; there is a link to [upgrade software](#) you will need to download the latest software for the RX45X & 55X MK5 Receiver Board. The following instructions should guide you through the process.

1. Format the Micro SD card in Windows Explorer by right clicking on Disk Icon



2. Select "Format". Must be "FAT" not "FAT 32". Make sure "Volume label" field is **blank**.

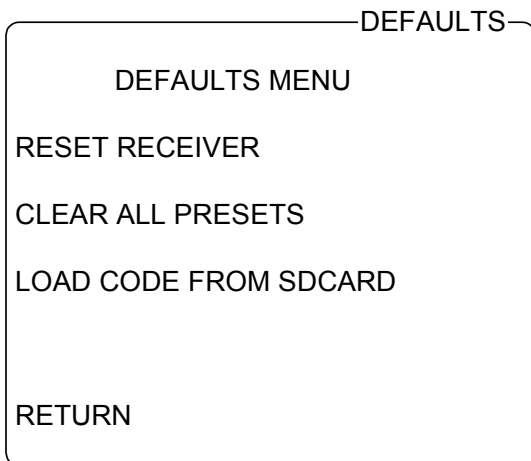


3. Click on "Start".
4. Download the file RX55XV**.CDE file to Desktop from the [BBV Support Server](#). This will be a zip file you will need to unzip it to your desktop.
5. Rename the unzipped file to RX55x.cde
6. Copy file to Micro SD card.
7. If wrong file is copied, or copy fails the card must be re-formatted. **DO NOT** delete a file and then copy new file.
The Micro SD card must contain only **ONE** file with no files deleted. File name must conform to DOS 8.3 form.

A VIDEO SOURCE MUST BE CONNECTED TO THE RECEIVER WHEN CARRYING OUT THIS PROCEDURE.

8. Now take the Micro SD card to the receiver. You will need to enter the receiver menu and select the DEFAULTS menu.

9.



These three items should be used with caution!

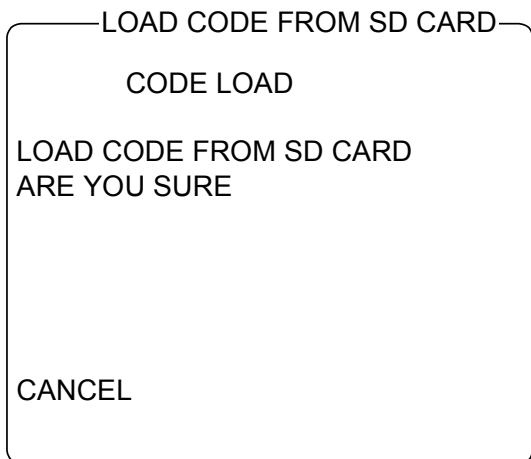
Set receiver to factory defaults. All preset/patrol settings etc will be cleared.

Erase ALL preset positions only.

Upgrade the receiver software from the Micro SD card

RETURN to MAIN MENU

10.



This item should be used with caution!

Will update the Firmware that runs the receiver.

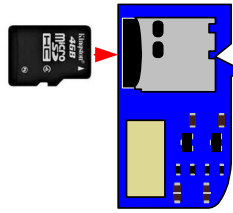
RETURN to DEFAULTS MENU

11.

LOAD CODE FROM SD CARD

Insert SD Card then press
SW2 (MENU).

Insert the Micro SD card at this time.



Push the card firmly in so that it locks in to the card holder.

12.

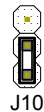
LOAD CODE FROM SD CARD

Move Link J10

Move the HEADER from the default position to the flash
program position



THE DEFAULT LOCATION



THE FLASH PROGRAM LOCATION

13.

LOAD CODE FROM SD CARD

Link OK
Press SW1 (UP)

When the link is fitted to the FLASH PROGRAM position
the display will change.



THE FLASH PROGRAM LOCATION

14.

LOAD CODE FROM SD CARD

Link OK
Press SW1 (UP)
Erasing blocks
.....
Erase OK!
Programming

The unit is now being reprogrammed.

The old software is erased.
New software is loaded for the MICRO SD card
The Power LED will flash until programming has finished.

NOTE THIS WILL TAKE SEVERAL MINUTES

15.

LOAD CODE FROM SD CARD

Link OK
Press SW1 (UP)
Erasing blocks
.....
Erase OK!
Programming
Re-position Link J10

The unit is now reprogrammed.

The Power LED will stop flashing.
When the HEADER is fitted to the DEFAULT position the receiver will restart and run the new Firmware.



THE DEFAULT LOCATION

Extend your BBV Warranty from 12 months to 3 years

As of the 1st September 2008 BBV have offered our customers the opportunity to extend the standard 12 month warranty to 3 years.

You must register for the extended warranty within 12 months of the date of manufacture.

How to register for the 3 year warranty

Registering for the new, longer 3 year warranty term is quick and easy.

Either:

Complete the warranty application card that comes in the box with your BBV product, and return it FREEPOST to BBV:


BBV 3 Year Warranty

If this card is returned with the serial number of the product and the installation company details BBV will extend the warranty period from 12 Months to 36 Months.

Number of Units, Start Serial No. Final Serial No.

Company Name: _____
 Contact Name: _____
 Phone Number: _____
 Site Name: _____
 Address 1: _____
 Address 2: _____
 Address 3: _____
 Post Code: _____
 e-mail address: _____

Please could you send me information especially on:
 Rx100s
 Rx45X & Rx 65X
 FBM Video Matrices
 Tx1500 Video Matrices
 Starcard & Starcard Converters
 BBV Cloud

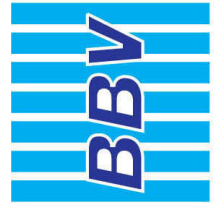
Do you read: **PSI MAGAZINE**  Pick A Point

I do not require any other further product information.

BBV is a registered trademark of Building Block Video Ltd. All other trademarks, conditions & exclusions apply. VAT Reg No. 6175829 Registered in England No. 2630291 Registered Office: 17, Avon Park Close, Wey, Surrey, ESKI Surrey, UK. BB27 3JU

Or alternatively:

Register online at: www.bbvcctv.com
 Simply enter your details on the 'Warranty Cover' page.



Building Block Video Ltd

Tel: + 44 (0) 1323 842727

Fax: + 44 (0) 1323 842728

Support: + 44 (0) 1323 444600

www.bbvcctv.com

